

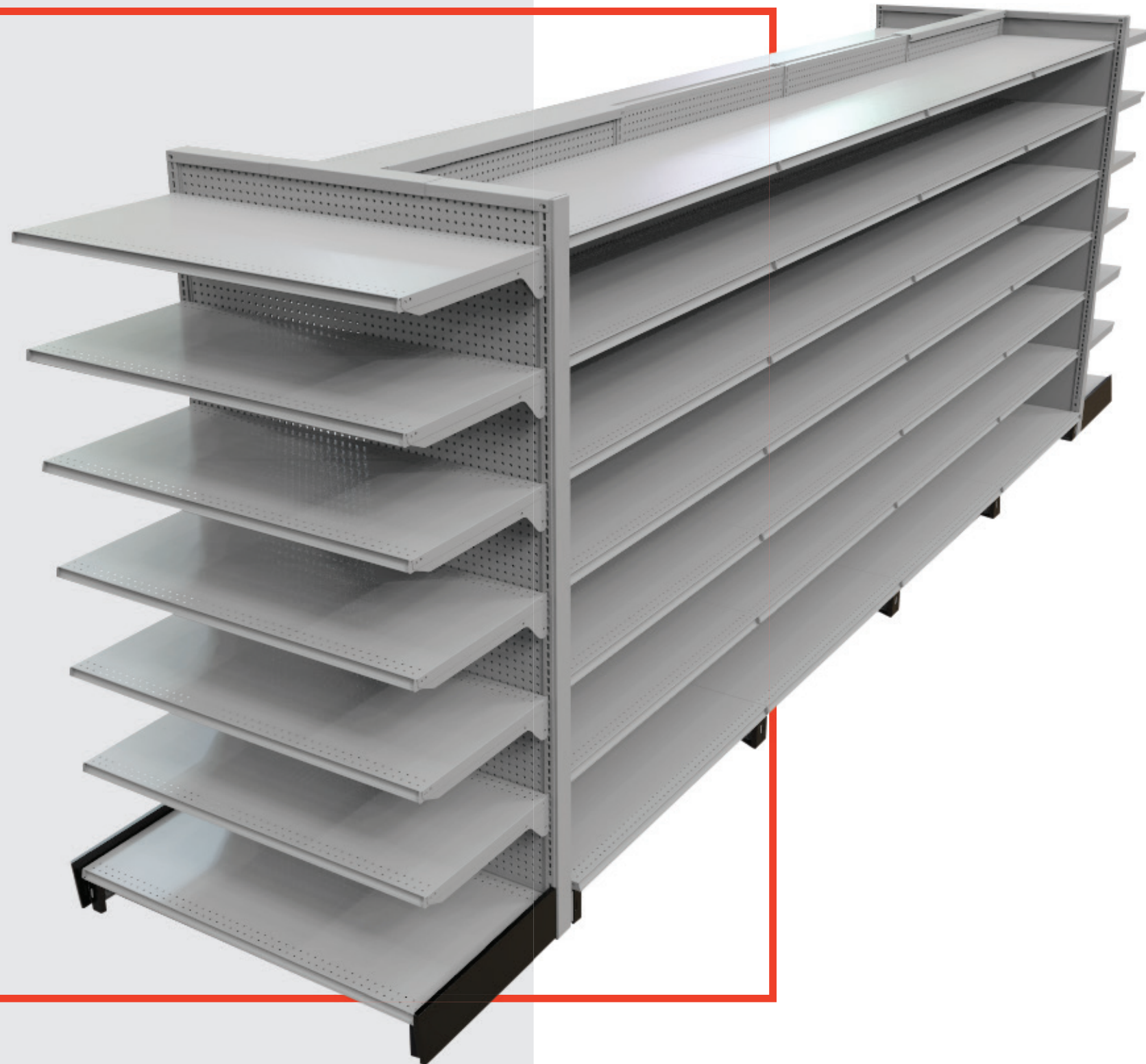


S SERIES

COMMERCIAL SHELVING

INSTALLATION GUIDE,
COMPONENTS,
ACCESSORIES AND CODES.





S SERIES SHELVING, A SIMPLE AND CONVENIENT CHOICE

More economical than the E series, the S series is nevertheless just as solid as its big sister, thanks to a multi-piece pole of incomparable rigidity. Massonite backs are available in several options. Fully modular, the shelf allows you to easily reconfigure your aisles and displays.

TECHNICAL SPECIFICATIONS

Post height: 48"- 120" (in increments of 6")

Base shelf: 6"- 30" deep (in increments of 2")

Width: 24"- 48" (in increments of 6")

Base shelf height:
 5" H. (from floor to the top of the low base shelf)
 7 1/4" H. (from floor to the top of the high base shelf)

Rear back options:
 Masonite (plain or Perforated), wire mesh & Slatwall

ETALEX

PORTFOLIO

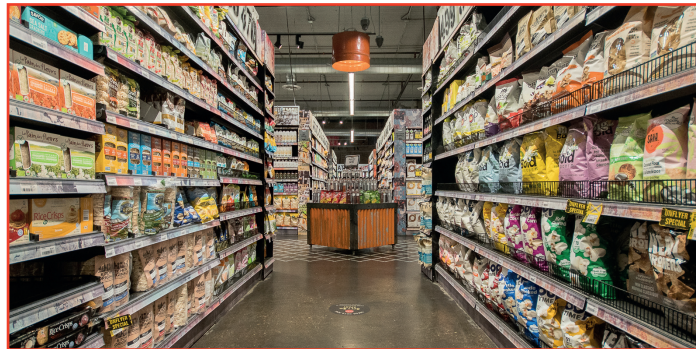


TABLE OF CONTENTS

ACCESSORIES	06 - 08
COMPONENTS	09 - 11
METAL BACK COMPONENTS	10
SLATWALL COMPONENTS	11
ASSEMBLY	11 - 17
METAL BACK ASSEMBLY	14
SLATWALL ASSEMBLY	15
ANCHORING	16
SECURITY	17
CALCULATION OF UNBALANCED GONDOLAS	18 - 19



OPTIONAL BACKS



PERFORATED BACK



PLAIN BACK



SLATWALL BACK

BASE SHELF OPTIONS



OPEN KICKPLATE

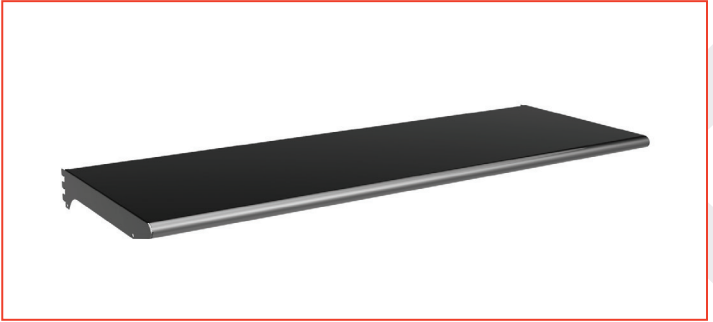


CLOSED KICKPLATE

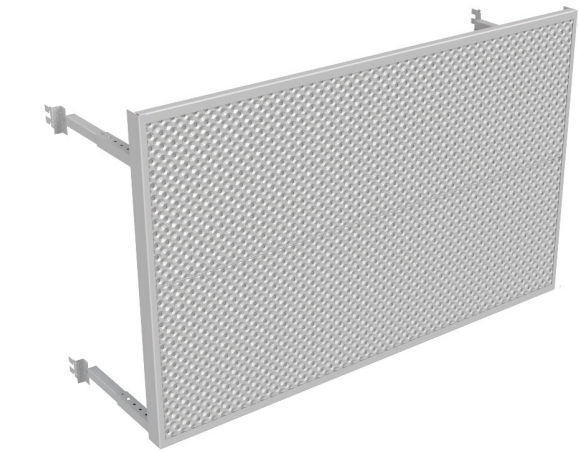
ACCESSORIES



ITEM STRAIGHT METAL SHELF
DEPTH 6" - 8" - 10" - 12" - 14" - 16" - 18"
LENGTH 24" - 48" (IN 6" INCREMENTS)



ITEM "BULLNOSE" METAL SHELF
DEPTH 6" - 8" - 10" - 12" - 14" - 16" - 18"
LENGTH 24" - 48" (IN 6" INCREMENTS)



ITEM EXTENDED METAL BACK
LENGTH 24" - 30" - 36" - 48" (VARIOUS HEIGHTS)



ITEM POST EXTENSION
VARIOUS HEIGHTS



ITEM SINGLE POST
VARIOUS HEIGHTS

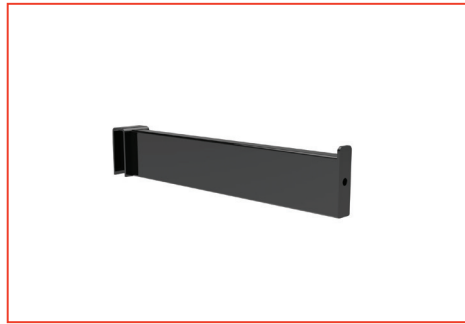


ITEM SLOPED SHELF
DEPTH 6" - 8" - 10" - 12" - 14" - 16" - 18"
LENGTH 24" - 48" (IN 6" INCREMENTS)

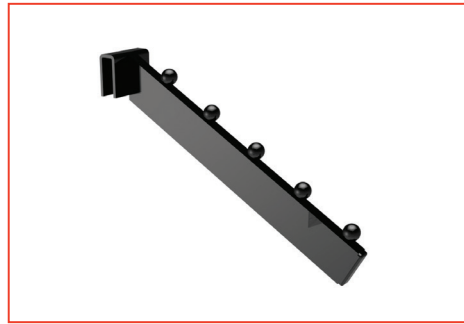


ITEM SLATWALL SHELF
DEPTH 8" - 10" - 12"

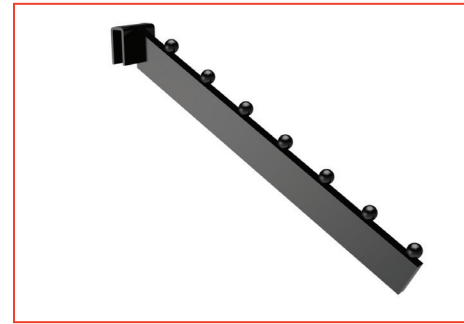
ACCESSORIES



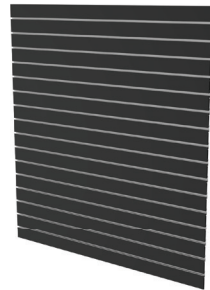
ITEM STRAIGHT CROSSBAR
LENGTH 6" - 8" - 10" - 12"



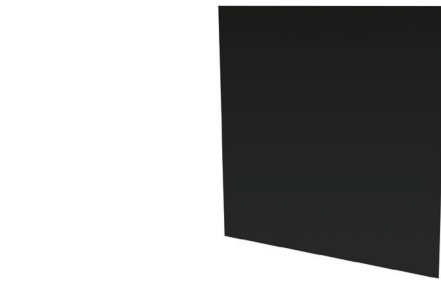
ITEM 5 BALL CROSSBAR
LENGTH 6" - 8" - 10" - 12"



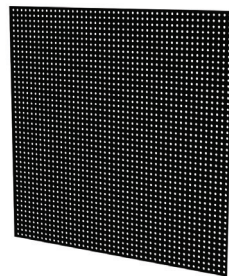
ITEM 7 BALL CROSSBAR
LENGTH 6" - 8" - 10" - 12"



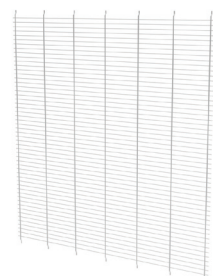
ITEM SLATWALL BACK
WIDTH 24" - 30" - 36" - 48"L X VARIOUS HEIGHTS



ITEM PLAIN BACK (METAL)
WIDTH 24" - 30" - 36" - 48"L X VARIOUS HEIGHTS



ITEM PERFORATED BACK (METAL)
WIDTH 24" - 30" - 36" - 48"L X VARIOUS HEIGHTS

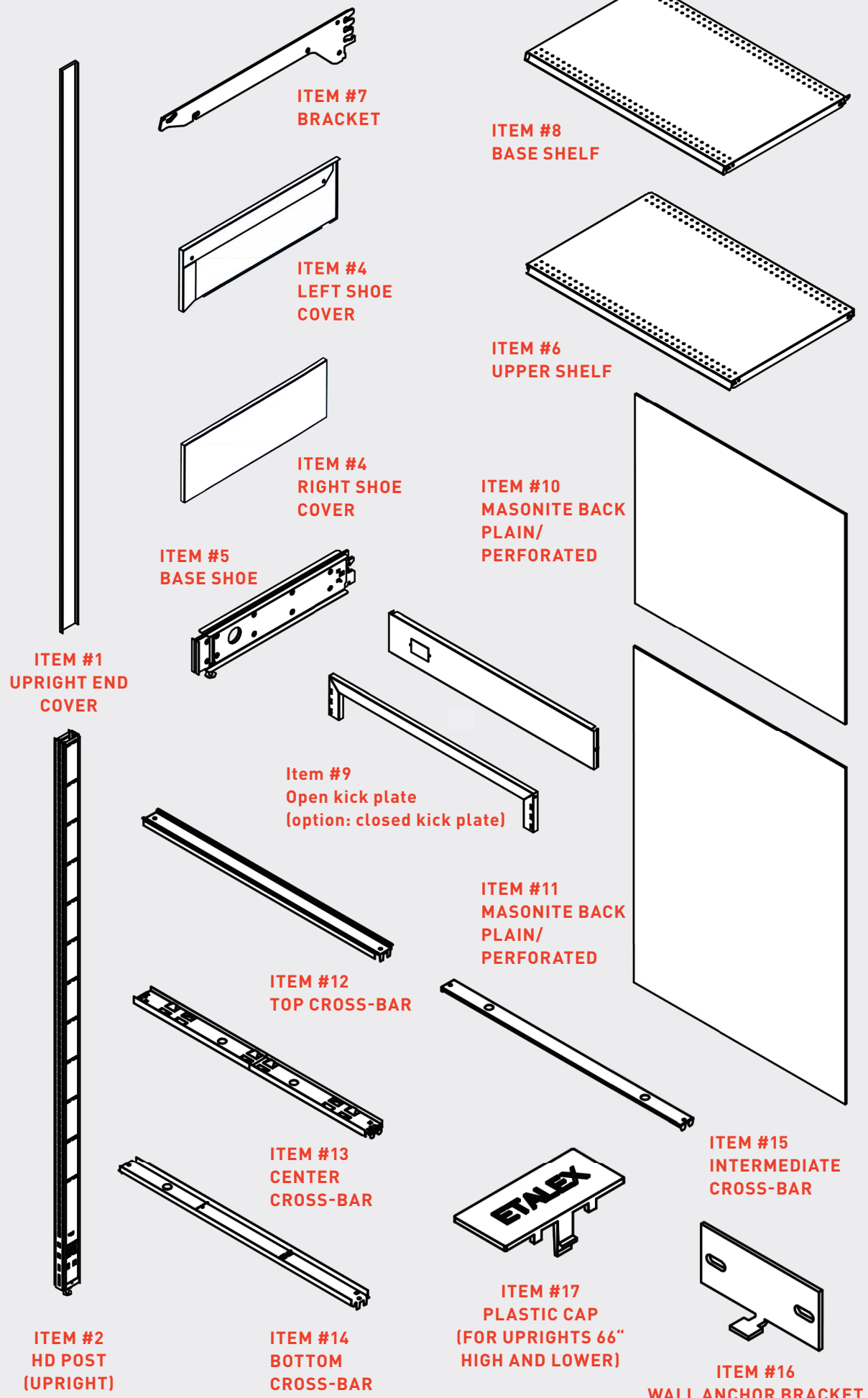


ITEM WIRE MESH BACK
WIDTH 24" - 30" - 36" - 48"L X VARIOUS HEIGHTS



ITEM EXTENDED BAR
DEPTH 1" - 4" - 6" - 8" - 10" - 12"

COMPONENTS



ITEM #1 UPRIGHT END COVER

ITEM #2 HD POST (UPRIGHT)

ITEM #7 BRACKET

ITEM #4 LEFT SHOE COVER

ITEM #4 RIGHT SHOE COVER

ITEM #5 BASE SHOE

ITEM #9 Open kick plate (option: closed kick plate)

ITEM #12 TOP CROSS-BAR

ITEM #13 CENTER CROSS-BAR

ITEM #14 BOTTOM CROSS-BAR

ITEM #8 BASE SHELF

ITEM #6 UPPER SHELF

ITEM #10 MASONITE BACK PLAIN/ PERFORATED

ITEM #11 MASONITE BACK PLAIN/ PERFORATED

ITEM #17 PLASTIC CAP (FOR UPRIGHTS 66" HIGH AND LOWER)

ITEM #15 INTERMEDIATE CROSS-BAR

ITEM #16 WALL ANCHOR BRACKET

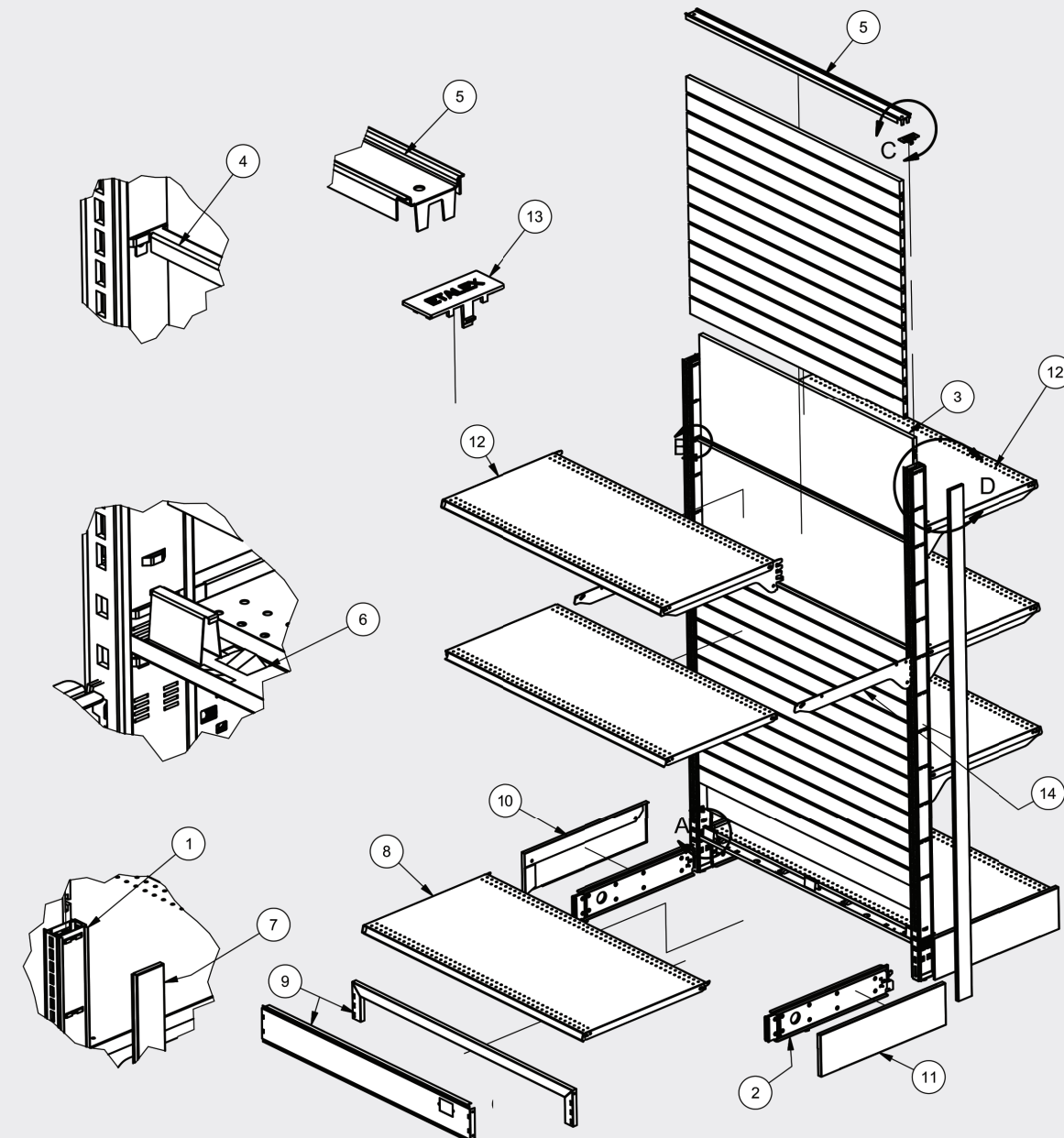
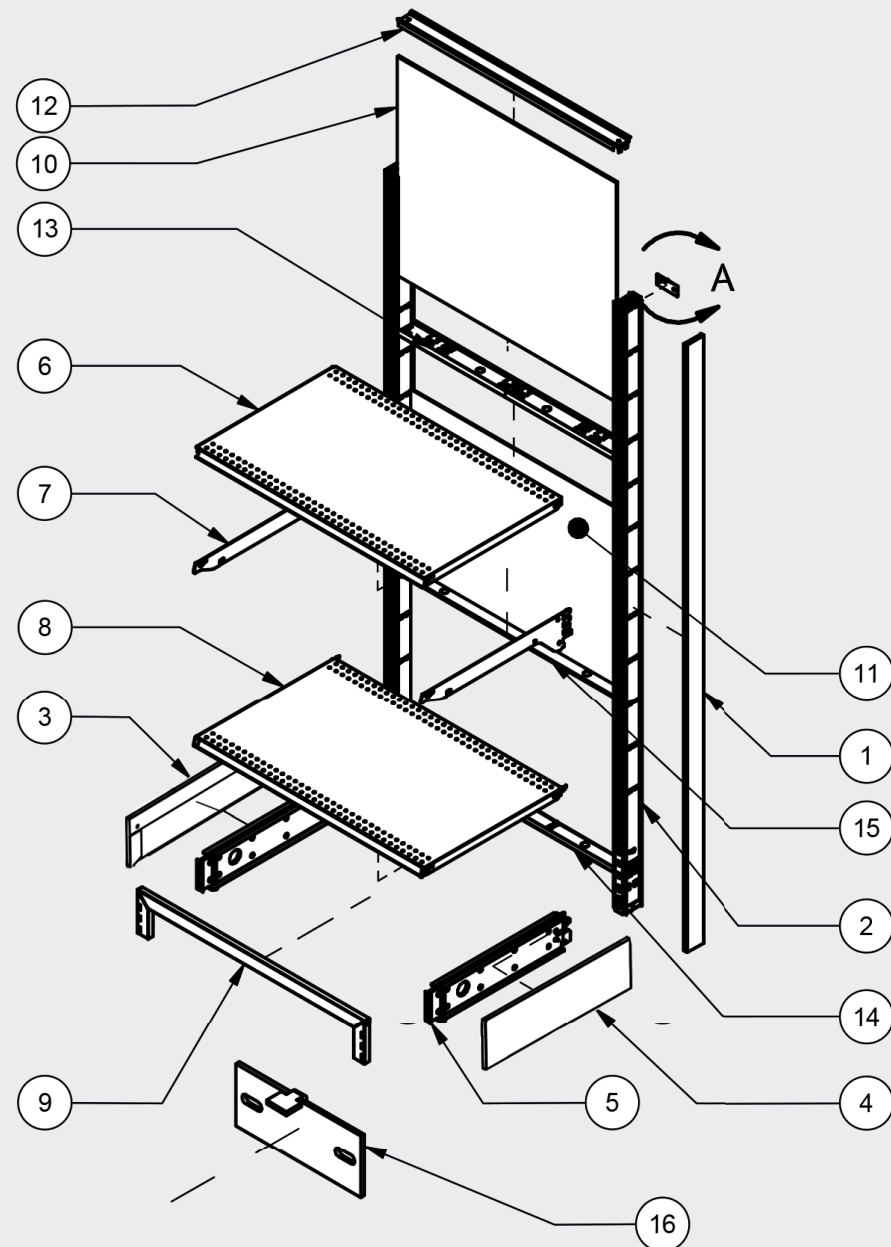
ETALEX

S SERIES WALL UNIT		
ITEM	QTÉ	DESCRIPTION
1	2	UPRIGHT END COVER
2	2	HD POST (UPRIGHT)
3	1	LEFT SHOE COVER
4	1	Right shoe cover
5	2	BASE SHOE
6	3	UPPER SHELF
7	6	BRACKET
8	1	BASE SHELF
9	1	OPEN KICK PLATE
10	1	MASONITE BACK PLAIN/ PERFORATED
11	1	MASONITE BACK PLAIN/ PERFORATED
12	1	TOP CROSS-BAR
13	1	CENTER CROSS-BAR
14	1	BOTTOM CROSS-BAR
15	1	INTERMEDIATE CROSS-BAR
16	2	WALL ANCHOR BRAQUET

S SERIES GONDOLA		
ITEM	QTÉ	DESCRIPTION
1	2	UPRIGHT END COVER
2	2	HD POST (UPRIGHT)
3	2	LEFT SHOE COVER
4	2	Right shoe cover
5	4	BASE SHOE
6	6	UPPER SHELF
7	12	BRACKET
8	2	BASE SHELF
9	2	OPEN KICK PLATE
10	2	MASONITE BACK PLAIN/ PERFORATED
11	2	MASONITE BACK PLAIN/ PERFORATED
12	1	TOP CROSS-BAR
13	1	CENTER CROSS-BAR
14	1	BOTTOM CROSS-BAR
15	1	INTERMEDIATE CROSS-BAR

GONDOLA ALSO AVAILABLE

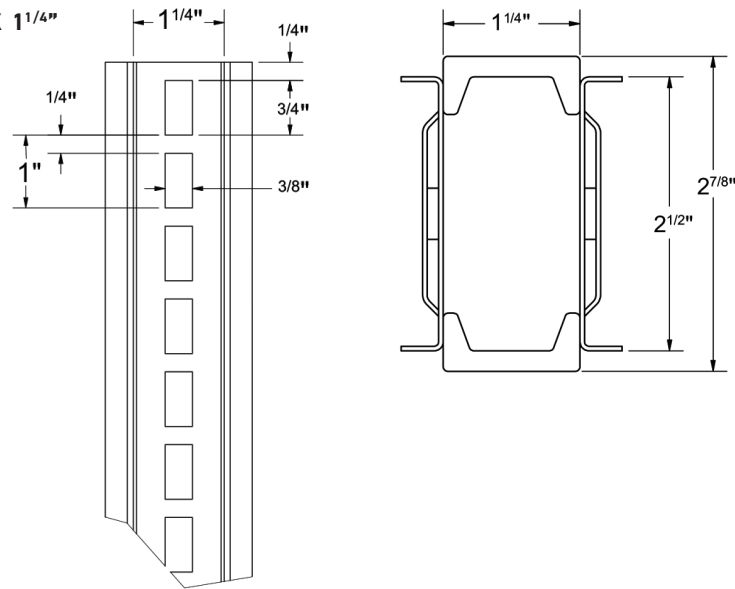
MURAL ALSO AVAILABLE



POST AND SHOE

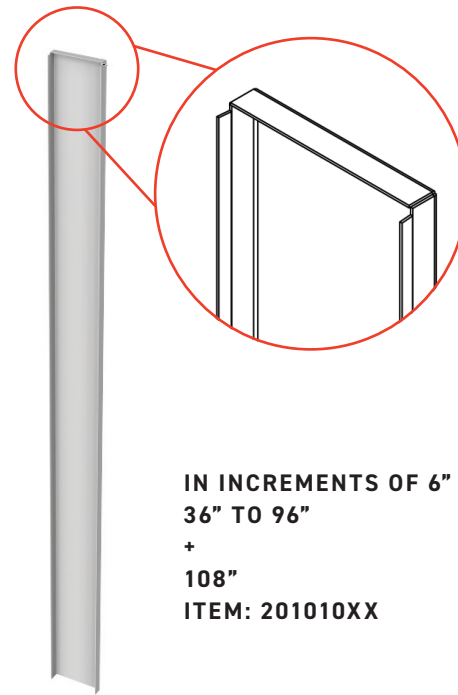
HD POST

ITEM: 2010453XX
 FORMAT: 2 7/8" X 1 1/4"



END CAP REQUIRED ONLY ON END POLES.

UPRIGHT END COVER

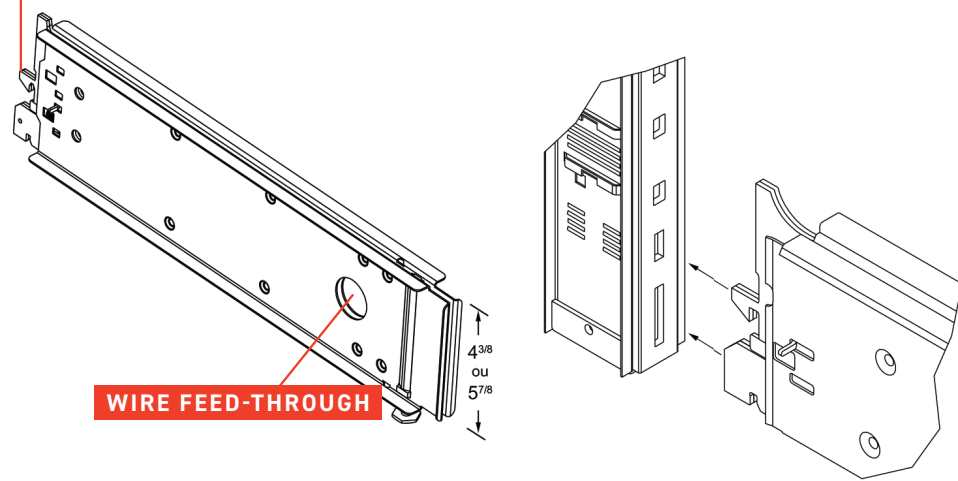


IN INCREMENTS OF 6"
 36" TO 96"
 +
 108"
 ITEM: 201010XX

SHOE

ITEM: 2040101XX | ITEM: 2040100XX
 HEIGHT: 4 3/8" | HEIGHT: 5 7/8"

AUTO-BLOCKING SAFETY PIN

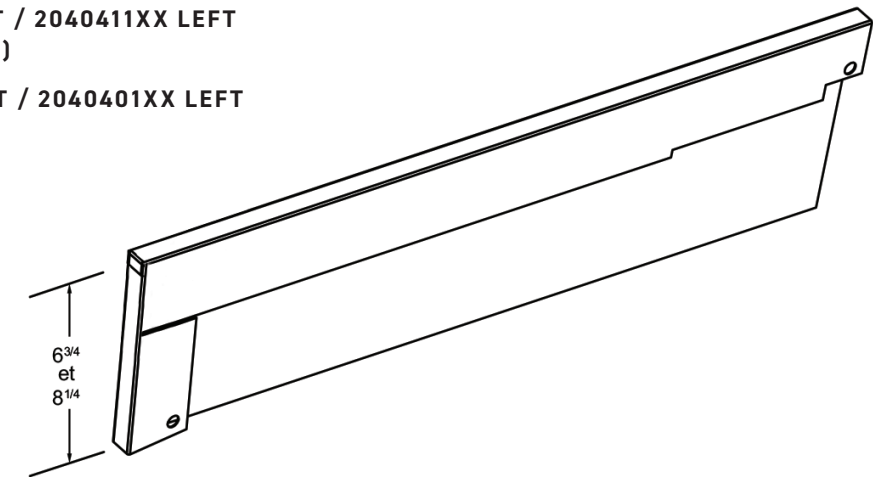


REMOVABLE SHOE WITH AUTO-BLOCKING SAFETY PIN AND WIRE FEED.

SHOE AND KICK PLATE

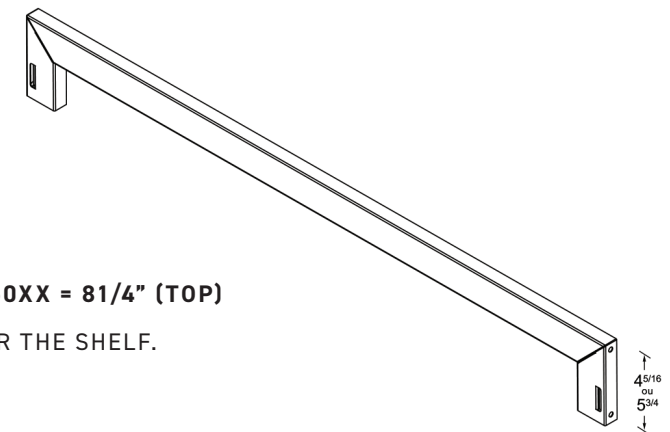
SHOE COVER

ITEM: 2040410XX RIGHT / 2040411XX LEFT
 HEIGHT: 6 3/4" (BOTTOM)
 ITEM: 2040400XX RIGHT / 2040401XX LEFT
 HEIGHT: 8 1/4" (TOP)



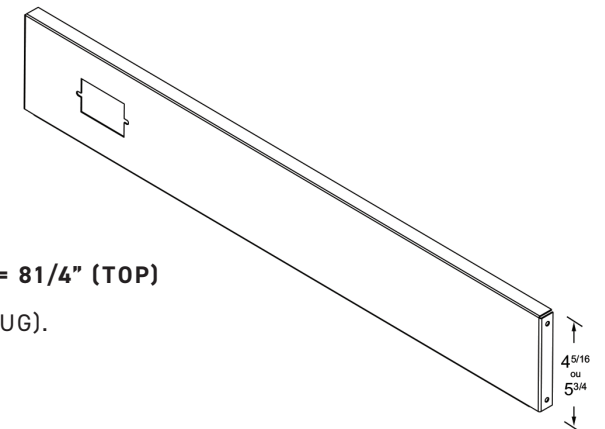
OPEN KICK PLATE

ITEM: 2050151XX = 6 3/4" (BOTTOM) / 2050150XX = 8 1/4" (TOP)
 OPEN KICK PLATE FOR EASY CLEANING UNDER THE SHELF.



CLOSED KICK PLATE

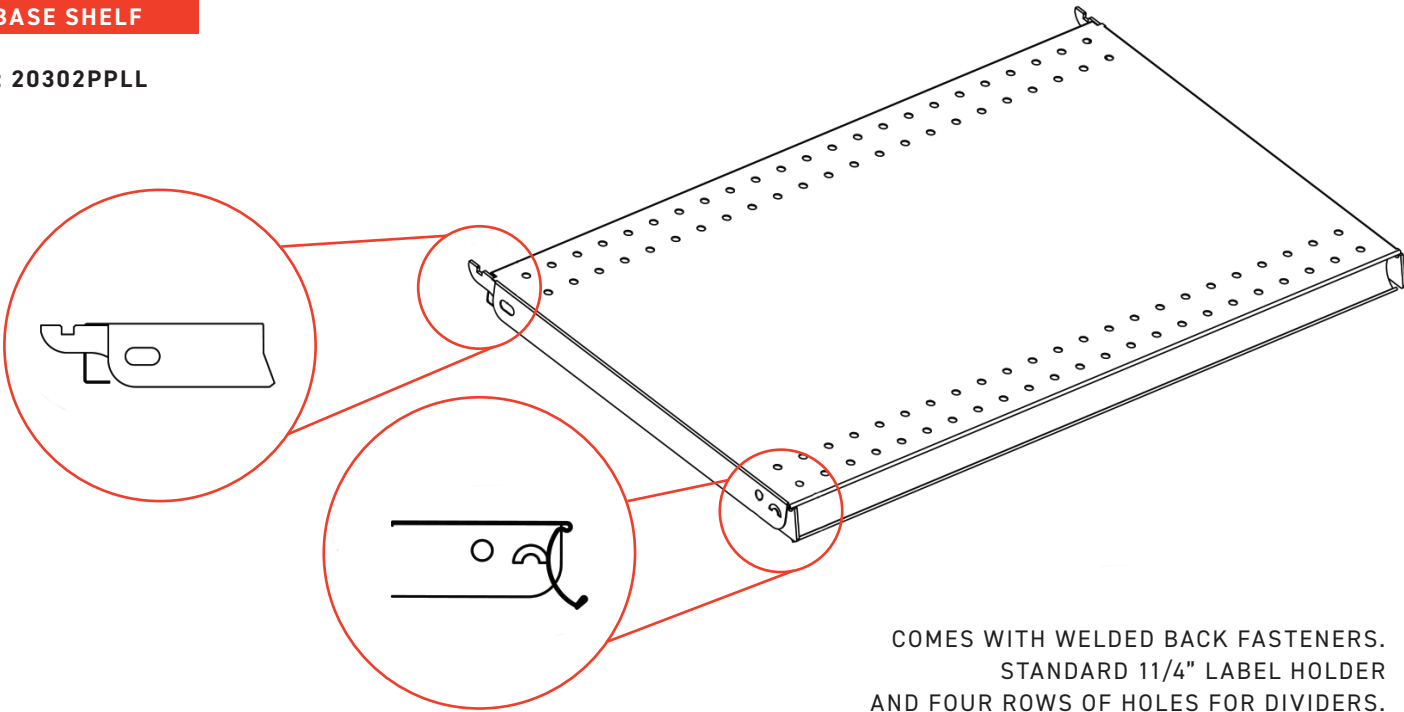
ITEM: 2050101XX = 6 3/4" (BOTTOM) / 2050100XX = 8 1/4" (TOP)
 CLOSED KICK PLATE (WITH HOLE FOR ELECTRIC PLUG).



SHELVES

BASE SHELF

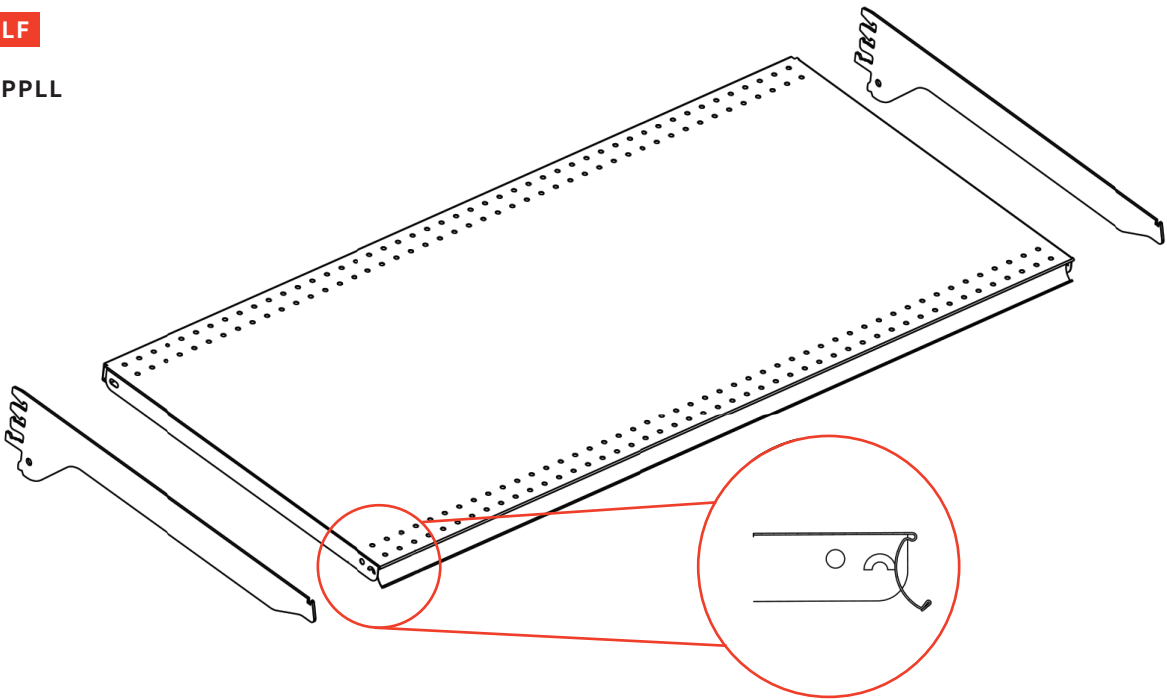
ITEM: 20302PPLL



COMES WITH WELDED BACK FASTENERS.
STANDARD 11/4" LABEL HOLDER
AND FOUR ROWS OF HOLES FOR DIVIDERS.

UPPER SHELF

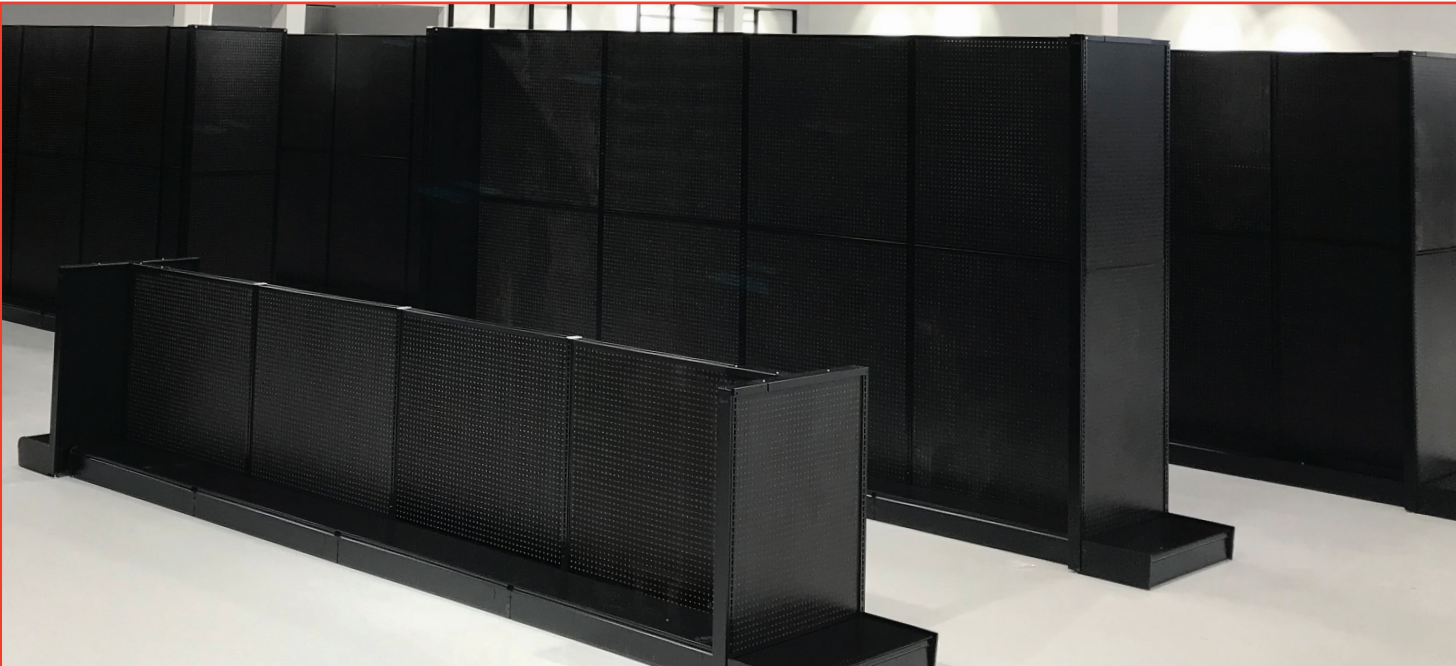
ITEM: 00301PPLL



BRACKET NOT INCLUDED. SHELF WITH WELDED REINFORCEMENTS.
STANDARD 11/4" LABEL HOLDER. OPTION WITH WELDED SUPPORTS AVAILABLE.

BRACKETS S SERIES

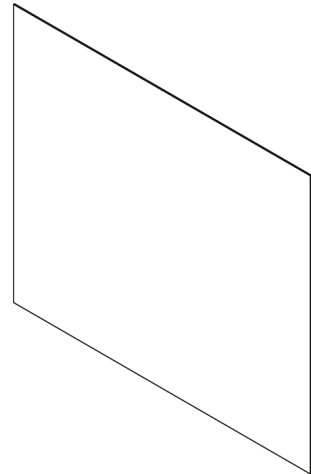
11 GA (0.121")		2-POSITION BRACKET				
	LENGTH	GRANDEUR	CODE PRODUIT	ÉPAISSEUR		
		6"	210010006	0.121"		
		8"	210010008	0.121"		
		12"	210010012	0.121"		
12 GA (0.099")		3-POSITION BRACKET				
	LENGTH - 3/32"					
		10"	210020010	0.099"		
		12"	210020012	0.099"		
		14"	210020014	0.099"		
12 GA (0.099")		3-POSITION BRACKET				
	LENGTH + 1/16"					
		16"	210020016	0.099"		
		18"	210020018	0.099"		
		20"	210020020	0.121"		
		22"	210020022	0.121"		
		24"	210020024	0.121"		
		26"	210020026	0.121"		
11 GA (0.121")		SUPPORT HD 1 POSITION				
	LENGTH + 1/4"	#LASER	REV	LENGTH	PRODUCT CODE	THICKNESS
		SUPP-210050022-36X		22"	210050022	0.121"
				24"	210050024	0.121"
				26"	210050026	0.121"
		210050028RA-36X	A	28"	210050028	0.121"
		210050030RA-36X	A	30"	210050030	0.121"
		210050036RA-28X	A	36"	210050036	0.121"



ASSEMBLY

PLAIN MASONITE BACK

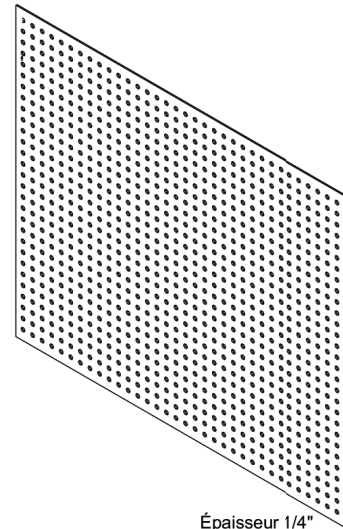
ITEM: PLB05 HH LL
THICKNESS = 1/4"



Épaisseur 1/4"

PERFORATED MASONITE BACK

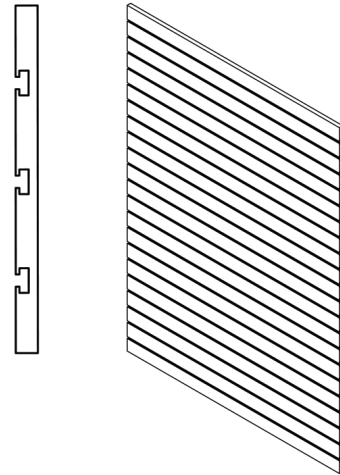
ITEM: PEB05 HH LL
THICKNESS = 1/4"



Épaisseur 1/4"

SLATWALL BACK

HEIGHT = NOMINAL - 65/8"
LENGTH = NOMINAL - 17/16"
THICKNESS = 3/4"



LENGTH: IN INCREMENTS OF 6" / 24" À 48"
HEIGHT: IN INCREMENTS OF 6" / 36" À 96" + 108", 120"

TRAVERSES SÉRIE S

CROSS-BARS LENGTH: 24", 30", 36", 42", 48"	FOR MASONITE BACK	FOR SLATWALL BACK
TOP CROSS-BAR CLOSES THE TOP OF A SECTION	 ITEM: 2070100XX	 ITEM: 2070105XX
INTERMEDIATE CROSS-BAR TO SUPPORT THE BACK (HOLES FOR WIRING)	 ITEM: 2070400XX	 ITEM: 2070420XX
CENTER CROSS-BAR FOR BACK SECTION MASONITE ONLY. SERVES AS A SEAL BETWEEN THE PANELS	 ITEM: 2070300XX	
INFERIOR CROSS-BAR SUPPORTS BACK AT THE BASE	 ITEM: 2070200XX	 ITEM: 2070230XX

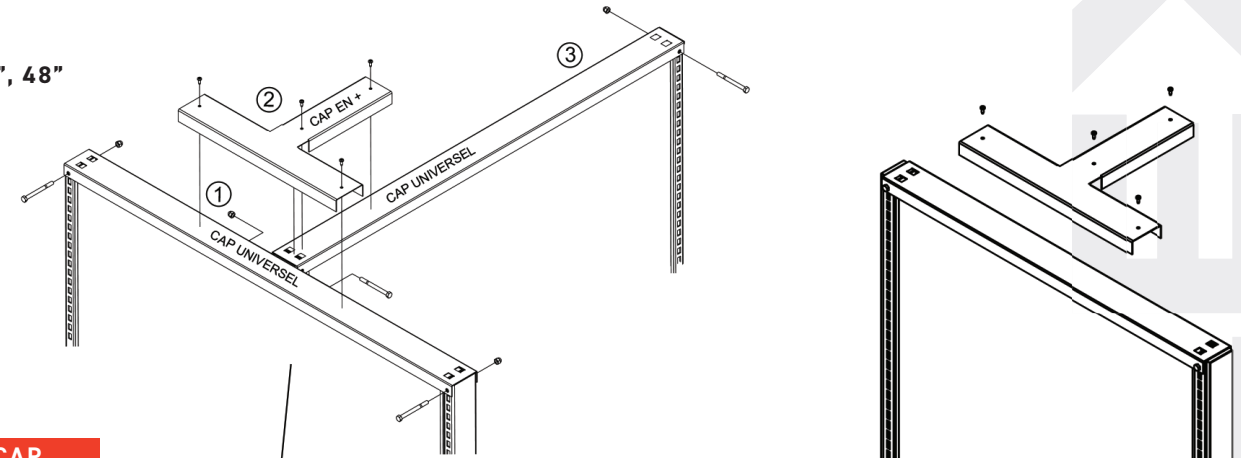
ASSEMBLY

T CAP

3 PIECES
(INCLUDES # 1, 2 AND 3)

FOR HEIGHT OF 72"
AND/OR FOR HEAVY USAGE

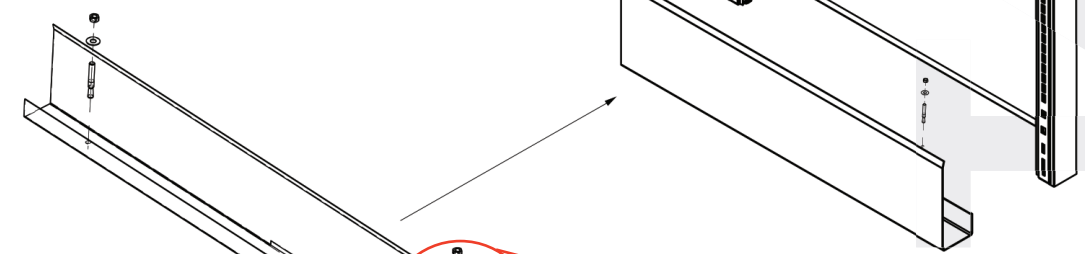
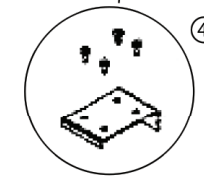
LENGTH :
24", 30", 36", 42", 48"



FINISHING CAP

2 PIECES
(INCLUDES # 1, AND 4)

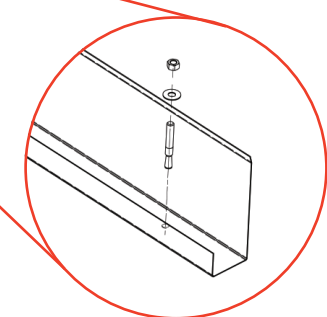
FOR HEIGHT OF 72"
AND/OR FOR LIGHT USAGE



FLOOR RETAINING BASEBOARD

FOR END OF WALL UNITS
0050810XX

LENGTH :
24", 30", 36", 42", 48"

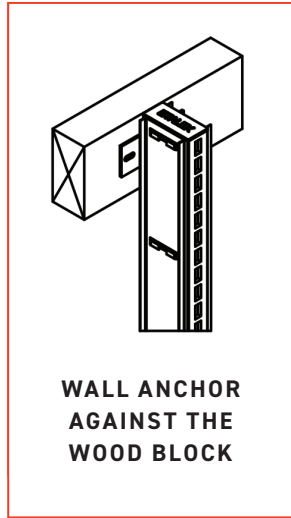
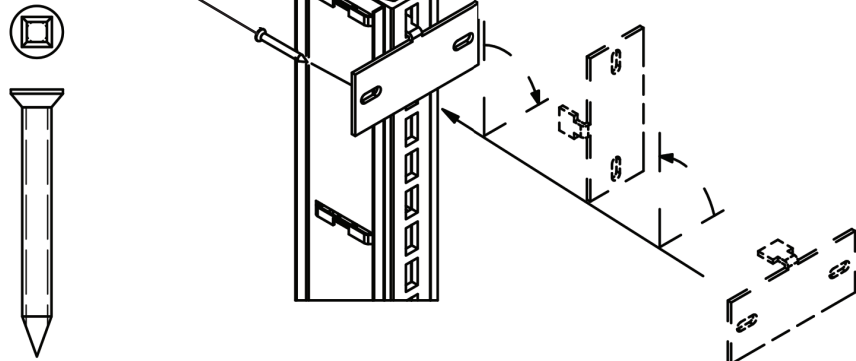


ASSEMBLY

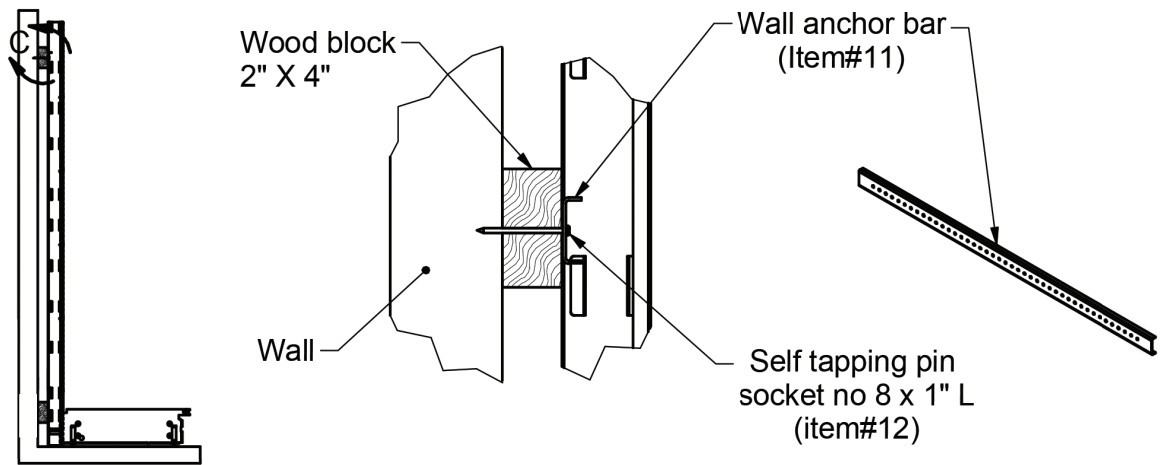
WALL ANCHORING

STEP 1: INSTALL THE WALL ANCHOR BRACKET AT THE TOP OF EACH POST. INSERT THE TOOTH OF THE ANCHOR IN THE FIRST SLOT FROM THE BACK BY TURNING IN THE POSITION AND SECURE IT WITH THE WOOD SCREW NO 8 X 1/2" L X 2".

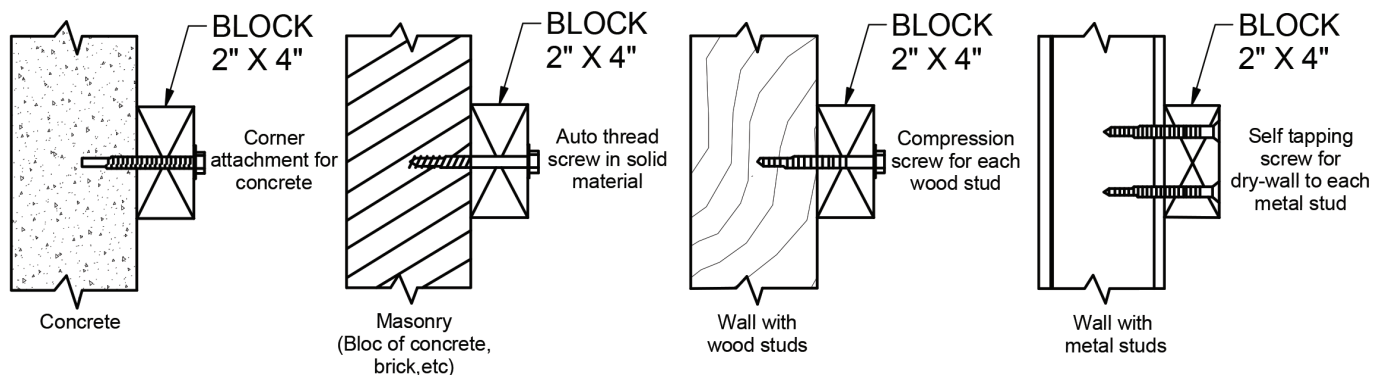
**WOOD SCREW PAN SOCKET
NO 8 X 1 1/2" L X 2**



OTHER OPTION: THE WALL ANCHOR BAR IS REQUIRED FOR ALL WALL UNITS, TO LIMIT FORWARD DEFLECTION.

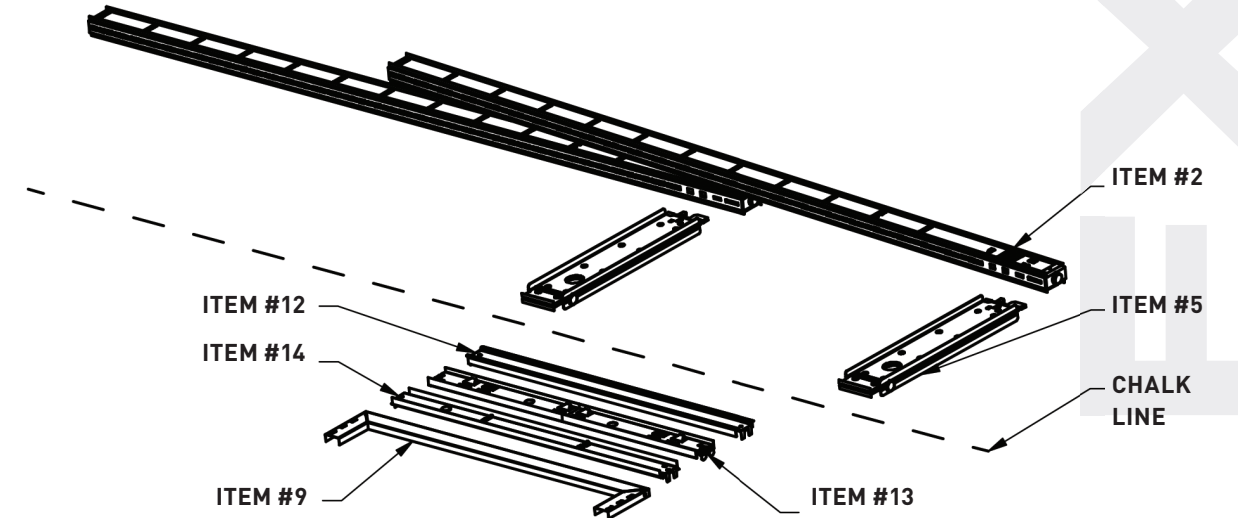


FIXING THE BLOCK TO THE WALL STUDS



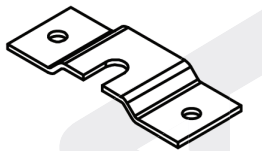
ASSEMBLY

STEP 2: TRACE A CHALK LINE ON THE FLOOR FOR DESIRED LOCATION OF GONDOLA AND LAY DOWN THE FEET (ITEM#3), POSTS (UPRIGHT) (ITEM#2), OPEN KICK PLATE (ITEM#9) AND THE CROSS-BARS ALONG THE CHALK LINE.

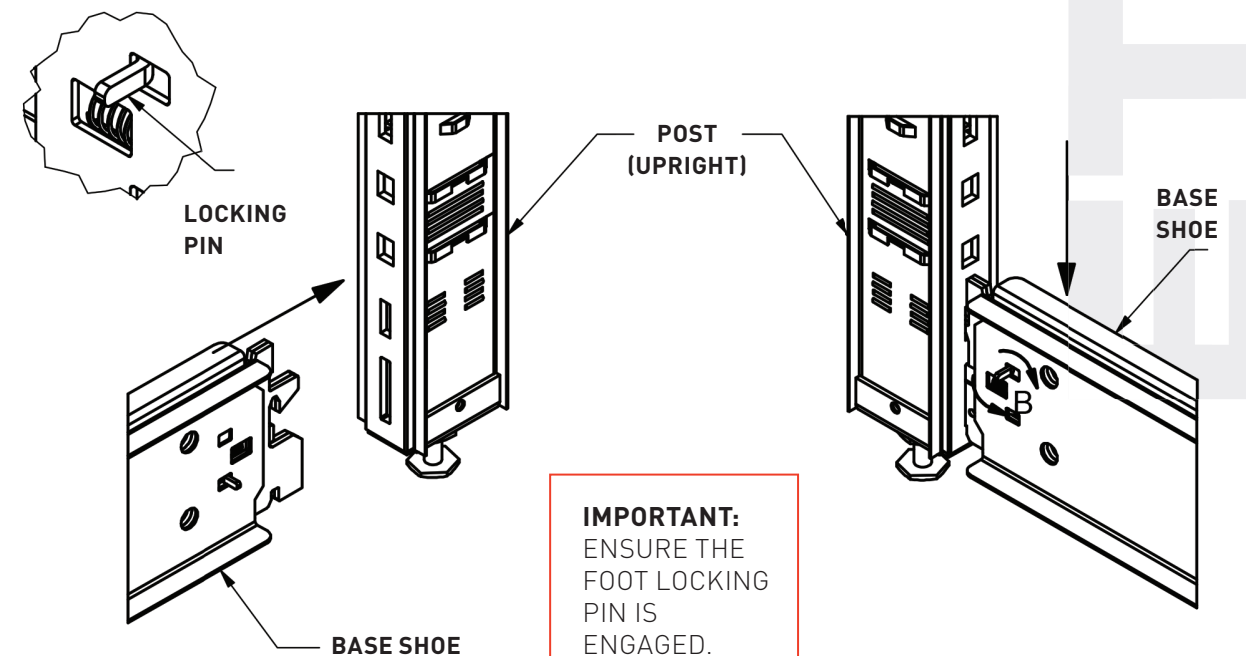


ADJUST THE BASE FOOT LEVELING SCREW AT 3/4" AND THE POST LEVELING SCREW AT 1/2".

NOTE: ENGINEERING MAY SUGGEST THE USE OF THE ANCHOR FOOT BRACKETS SECURED TO THE FLOOR WITH ANCHORS BOLTS (1/4" X 2 1/4") L FOR EACH POST AND/OR FOOT LEVELER.



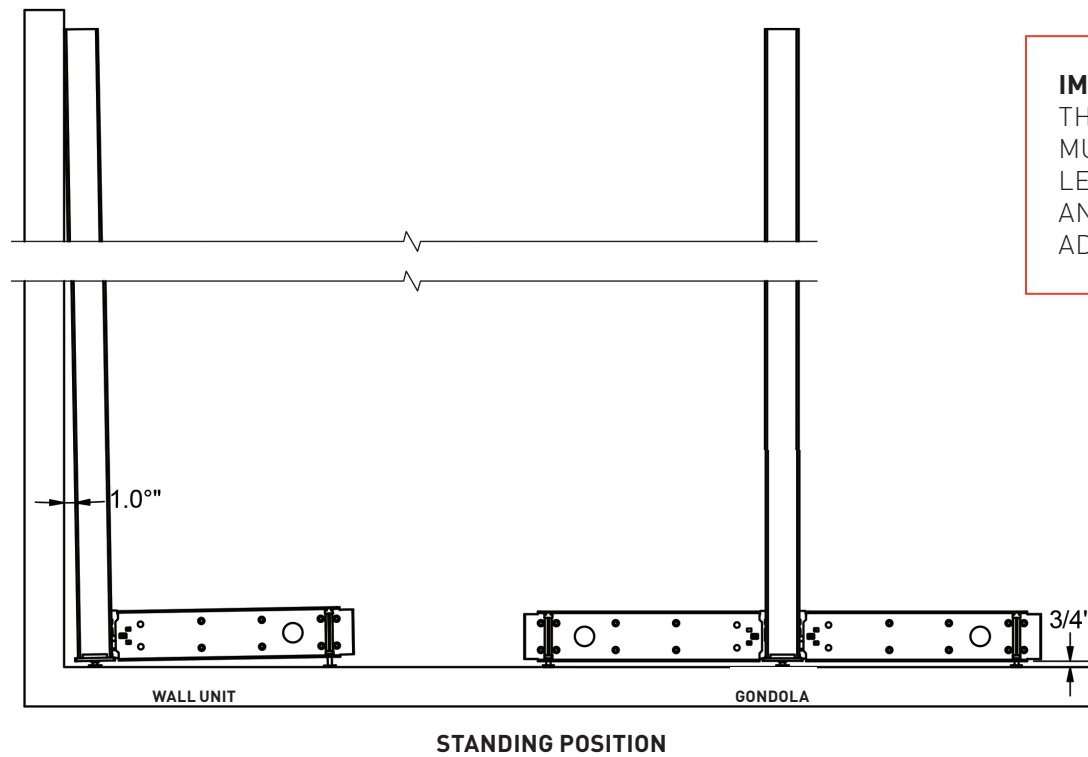
STEP 3: INSTALL THE BASE SHOE AT THE BOTTOM OF THE POST (UPRIGHT). INSERT THE TEETH INTO THE SLOTS AND APPLY PRESSURE BY PUSHING DOWN THE BASE SHOE UNTIL THE LOCKING PIN IS ENGAGED.



IMPORTANT: ENSURE THE FOOT LOCKING PIN IS ENGAGED.

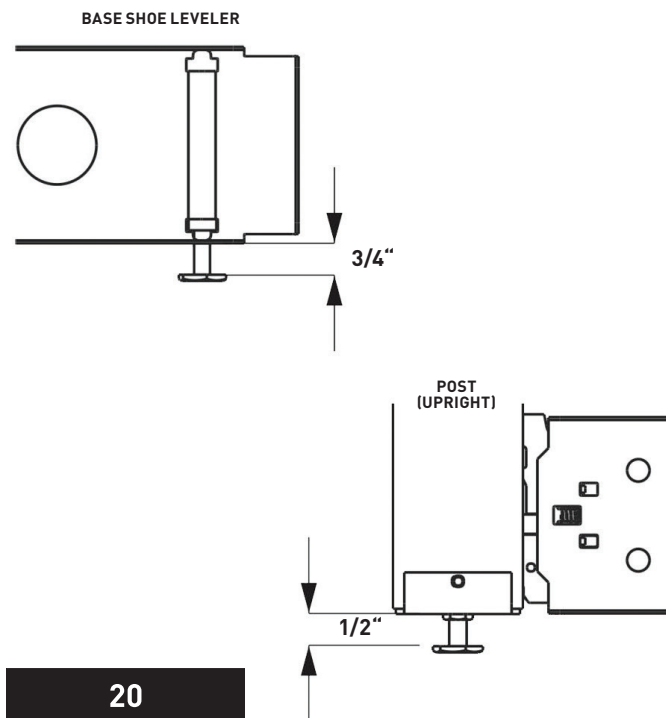
ASSEMBLY

STEP 4: LEVEL THE UNIT VERTICALLY, BY ADJUSTING THE LEVELERS IN THE FRONT OF THE FOOT AND ON THE POST (UPRIGHT) TO ENSURE THE STRUCTURES ARE LEVELED AND PLUMB.

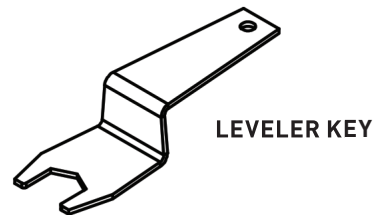


IMPORTANT:
THE GONDOLA
MUST BE
LEVELED
AND CORRECTLY
ADJUSTED.

GONDOLA - STEP 4.1:
ADJUST THE BASE SHOE LEVELLING SCREW AT 3/4" (BOTH SHOES). LEVELER ON THE UPRIGHT DOES NOT TOUCH THE FLOOR. THE UPRIGHT (POST) MUST BE AT 90° ANGLE WITH THE FLOOR.



WALL UNIT - STEP 4.2:
ADJUST THE BASE FOOT LEVELING SCREW AT 3/4" AND LOWER THE UPRIGHT POST LEVELING SCREW WITH A LEVELER KEY, TO ENSURE THE UPRIGHT LEANS BACK 1° FROM THE VERTICAL.



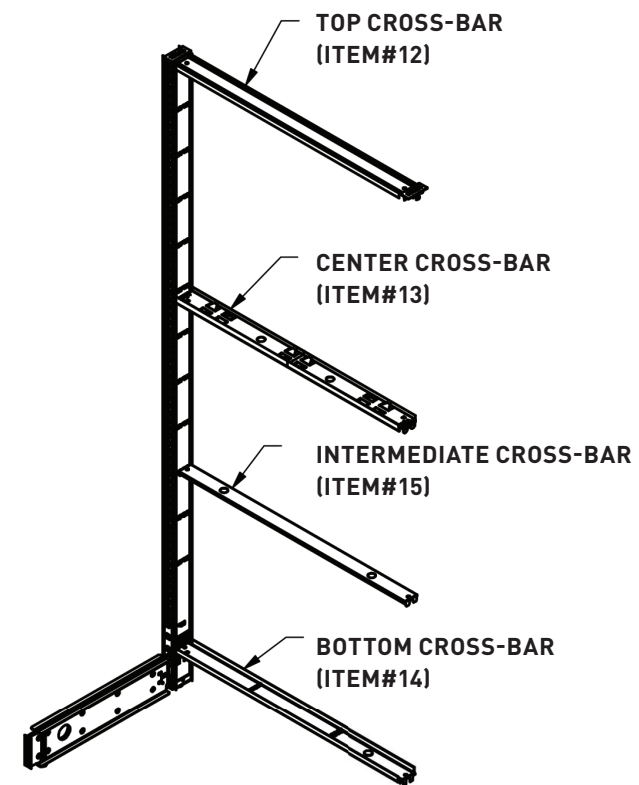
NOTE:
ENSURE THE UPRIGHT LEANS BACK 1° FROM THE VERTICAL.

ASSEMBLY

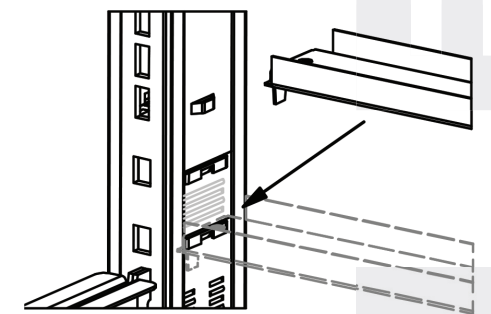
INSTALL THE CROSS-BARS AND THE MASONITE BACKS:

STEP 5:
1- INSERT THE TEETH OF THE BOTTOM CROSS-BAR INTO THE LOWER POSITION OF THE UPRIGHT SLOTS.
2- SLIDE IN THE MASONITE BACK 47 5/8" H AND INSTALL THE INTERMEDIATE CROSS-BAR IN THE MIDDLE REAR OF THE BACK.
3- INSTALL THE CENTER CROSS-BAR BEFORE SLIDING THE LAST MASONITE BACK 29 7/8" H IN PLACE AND INSTALL THE TOP CROSS-BAR.

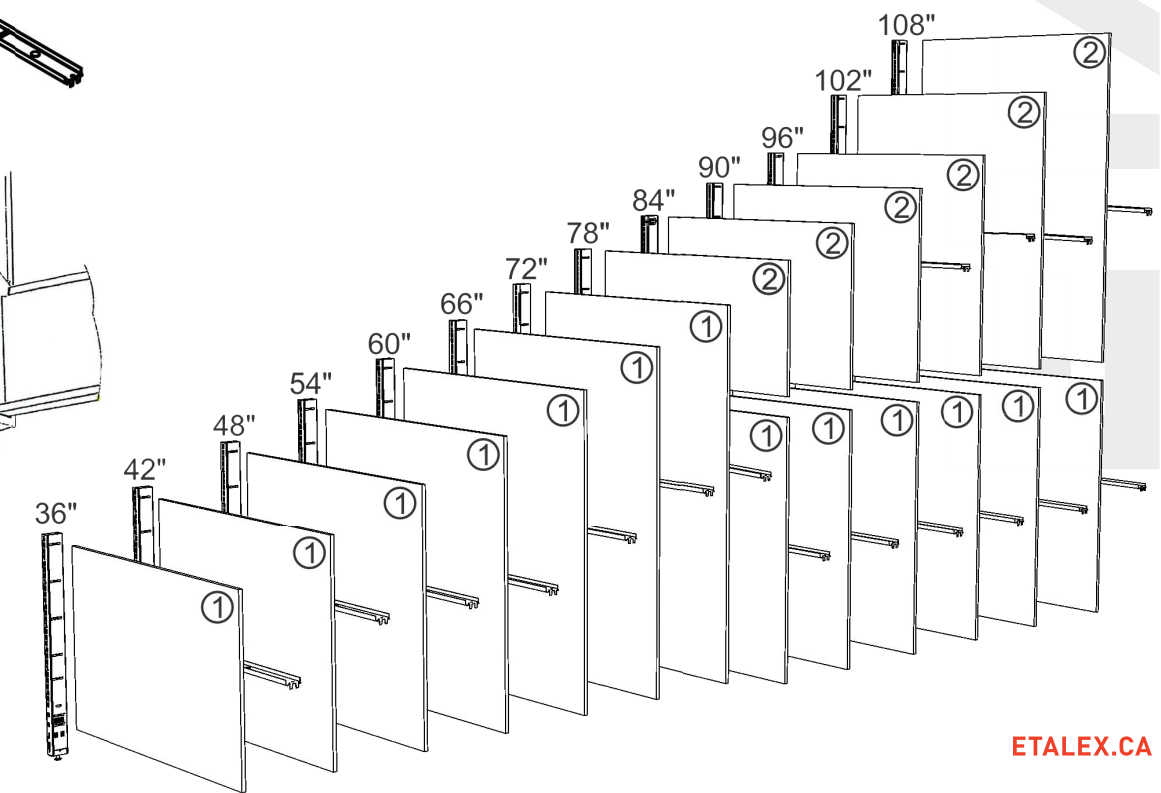
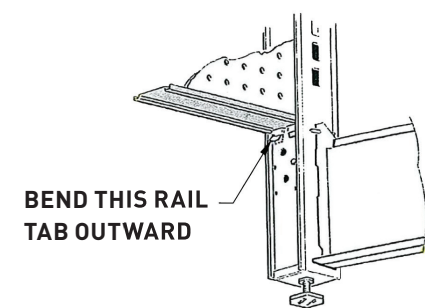
***SEE THE GRID OF THE MASONITE CHART**



NOTE:
WARNING! SLIDE MASONITE BACKS
IN PLACE SLOWLY. DO NOT DROP!

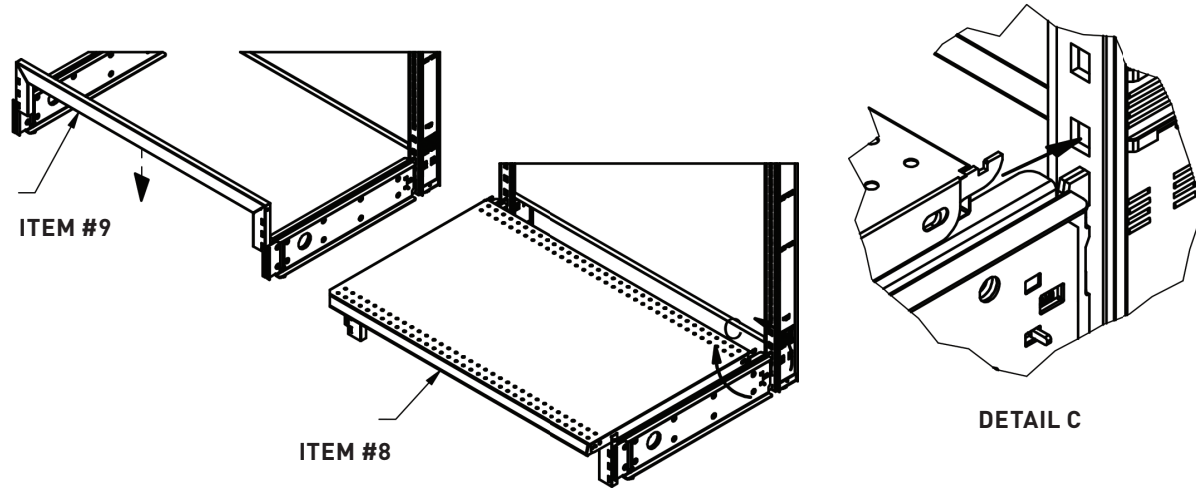


NOTE:
WHEN MASONITE BACKS ARE ONLY USED ON ONE SIDE OF THE WALL SECTION, BEND RAIL TAB ON OPPOSITE SIDE OF THE MASONITE BACK.

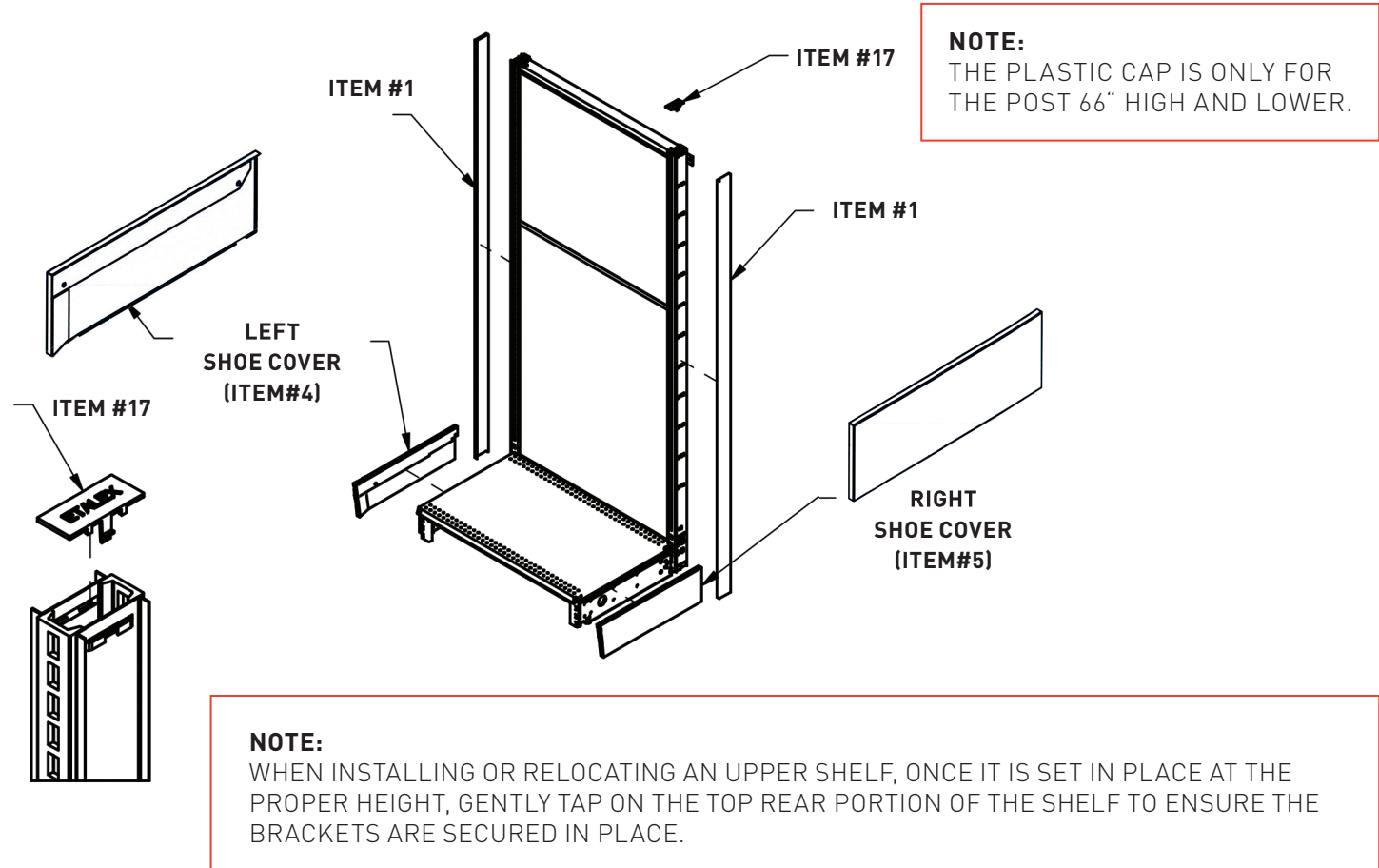


ASSEMBLY

STEP 6: INSERT THE OPEN KICK PLATE (ITEM#9) ON THE FRONT EDGE OF THE BASE SHOES, AND INSTALL THE BASE SHELF (ITEM#8) BY INSERTING THE TABS INTO THE BOTTOM SLOTS OF THE POST (UPRIGHT) TO STABILIZE THE STRUCTURE.



STEP 7: ENSURE THE UNIT IS LEVELED AND PLUMB AGAIN. INSTALL THE UPRIGHT END COVER (ITEM#1) ON BOTH EXTREMITIES, SLIDE THE SHOE COVERS (ITEM#4-5) ON TO THE BASE SHOES AND INSERT THE PLASTIC CAP (ITEM#17) ON THE TOP OF EACH POST (UPRIGHT). INSTALL THE BRACKETS AND UPPER SHELVES (ITEM#6) AT THE DESIRED HEIGHT.



ASSEMBLY

GRID OF THE MASONITE CHART

UPRIGHT HEIGHT	LENGTH NOMINAL	FIRST MASONITE HEIGHT	SECOND MASONITE HEIGHT	CENTRAL CROSS BAR QUANTITY	INTERMEDIATE CROSS BAR QUANTITY
32"	24"	29 ⁵ / ₈ "	-	-	1
	36"	29 ⁵ / ₈ "	-	-	1
36"	24"	29 ⁵ / ₈ "	-	-	1
	30"	29 ⁵ / ₈ "	-	-	1
	36"	29 ⁵ / ₈ "	-	-	1
	42"	29 ⁵ / ₈ "	-	-	1
42"	24"	35 ⁵ / ₈ "	-	-	1
	36"	35 ⁵ / ₈ "	-	-	1
	48"	35 ⁵ / ₈ "	-	-	1
48"	24"	41 ⁵ / ₈ "	-	-	1
	30"	41 ⁵ / ₈ "	-	-	1
	36"	41 ⁵ / ₈ "	-	-	1
	42"	41 ⁵ / ₈ "	-	-	1
54"	24"	47 ⁵ / ₈ "	-	-	1
	30"	47 ⁵ / ₈ "	-	-	1
	36"	47 ⁵ / ₈ "	-	-	1
	42"	47 ⁵ / ₈ "	-	-	1
60"	24"	53 ⁵ / ₈ "	-	-	1
	30"	53 ⁵ / ₈ "	-	-	1
	36"	53 ⁵ / ₈ "	-	-	1
	42"	53 ⁵ / ₈ "	-	-	1
66"	24"	59 ⁵ / ₈ "	-	-	1
	30"	59 ⁵ / ₈ "	-	-	1
	36"	59 ⁵ / ₈ "	-	-	1
	48"	59 ⁵ / ₈ "	-	-	1
72"	24"	65 ⁵ / ₈ "	-	-	1
	30"	65 ⁵ / ₈ "	-	-	1
	36"	65 ⁵ / ₈ "	-	-	1
	42"	65 ⁵ / ₈ "	-	-	1
78"	24"	65 ⁵ / ₈ "	-	-	1
	30"	65 ⁵ / ₈ "	-	-	1
	36"	65 ⁵ / ₈ "	-	-	1
	48"	65 ⁵ / ₈ "	-	-	1
84"	24"	47 ⁵ / ₈ "	23 ⁷ / ₈ "	1	1
	24"	47 ⁵ / ₈ "	23 ⁷ / ₈ "	1	1
	36"	47 ⁵ / ₈ "	23 ⁷ / ₈ "	1	1
	42"	47 ⁵ / ₈ "	23 ⁷ / ₈ "	1	1
90"	24"	47 ⁵ / ₈ "	29 ⁷ / ₈ "	1	1
	30"	47 ⁵ / ₈ "	29 ⁷ / ₈ "	1	1
	36"	47 ⁵ / ₈ "	29 ⁷ / ₈ "	1	2
	42"	47 ⁵ / ₈ "	29 ⁷ / ₈ "	1	2
96"	24"	47 ⁵ / ₈ "	35 ⁷ / ₈ "	1	2
	30"	47 ⁵ / ₈ "	35 ⁷ / ₈ "	1	2
	36"	47 ⁵ / ₈ "	35 ⁷ / ₈ "	1	2
	42"	47 ⁵ / ₈ "	35 ⁷ / ₈ "	1	2
108"	24"	47 ⁵ / ₈ "	41 ⁷ / ₈ "	1	2
	30"	47 ⁵ / ₈ "	41 ⁷ / ₈ "	1	2
	36"	47 ⁵ / ₈ "	41 ⁷ / ₈ "	1	2
	42"	47 ⁵ / ₈ "	41 ⁷ / ₈ "	1	2
120"	24"	47 ⁵ / ₈ "	53 ⁷ / ₈ "	1	3
	36"	47 ⁵ / ₈ "	53 ⁷ / ₈ "	1	3
	48"	47 ⁵ / ₈ "	65 ⁷ / ₈ "	1	3



FOR YOUR SAFETY:

Install all shelving according to installation instructions.

Assembly or movement of any parts should only be carried out by trained personnel who have read and understand these instructions and warnings.

Do not use shelving parts or accessories for any purposes other than originally intended.

Do not combine Etalex products with non Etalex products.

Local codes and regulations concerning building, fire, sanitation, or seismic requirements may apply to some installations. It is the responsibility of the buyer of the fixtures to make sure that they are installed in compliance with any applicable codes and/or regulations.

Do not install damaged parts.

Never alter, modify or otherwise structurally change the shelving or any of its components.

Do not expose any sharp or pointed edges to customers and employees.

Never install shelves or accessories onto the side of an upright that has no base foot to support it.

Be sure all shelving parts or accessories are completely seated in appropriate slotting.

Do not permit climbing or standing on shelving at any time... including the base shelf.

No shelves or accessories should project past the front of the base shelf.

Do not move an assembled unit, especially if merchandised.

Do not lean heavy items against the shelves.

Provide safe access to all merchandised items in accordance with applicable **osha/wcb/csst** regulations.

FOR TECHNICAL ASSISTANCE, CALL ETALEX DIRECT AT 1-800-351-3125

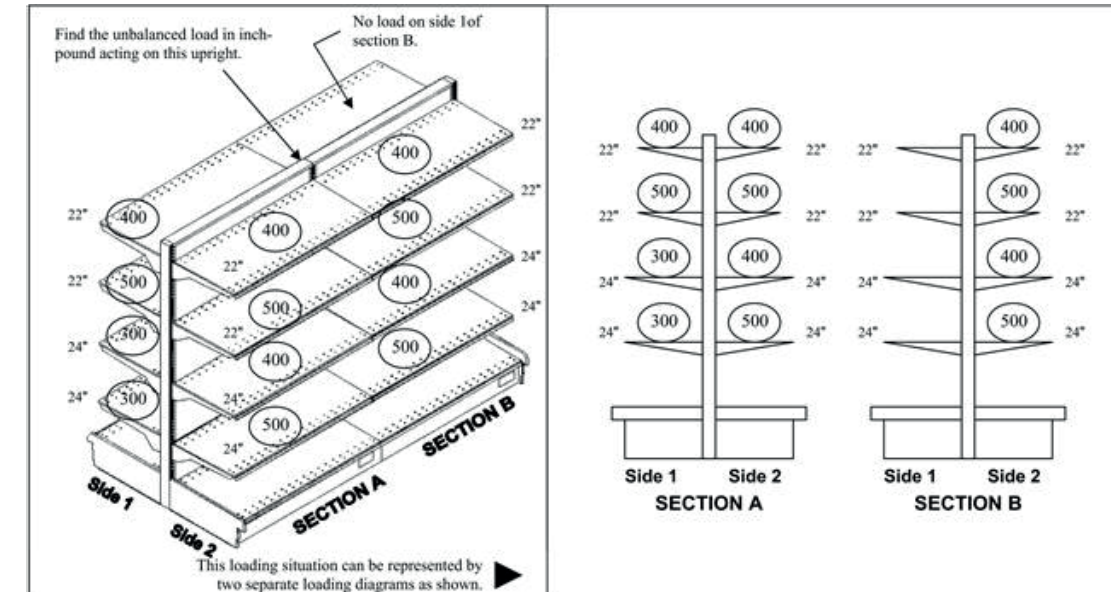
Shelf capacity of a wall unit S Series											
Maximum load per shelf (lb)	370	370	370	435	435	500	500	500	500	500	550
Depth of the shelf (po)	10	12	14	16	18	20	22	24	26	28	30
Total capacity per wall section (lb)	2385	2067	1824	1632	1476	1348	1240	1148	1069	1000	939
Number of shelves per section	Shelf Capacity vs number and depth of shelves (lb)										
Base + 1 shelf	1	370	370	370	435	435	500	500	500	500	550
Base + 2 shelves	2	370	370	370	435	435	500	500	500	500	470
Base + 3 shelves	3	370	370	370	435	435	449	413	383	356	313
Base + 4 shelves	4	370	370	370	408	369	337	310	287	267	235
Base + 5 shelves	5	370	370	365	326	295	270	248	230	214	188

CAPACITY AND UNBALANCED LOAD

WHEN HEAVILY LOADING ONE SIDE OF YOUR WALL OR ISLAND SHELVING UNIT, IT IS IMPORTANT TO DETERMINE IF YOU CREATE AN UNBALANCED LOAD THAT EXCEEDS THE MAXIMUM ALLOWABLE.

IN THE EXAMPLE BELOW, WE ILLUSTRATE HOW YOU CAN CALCULATE YOUR UNBALANCED LOAD IN INCH-POUND.

TO CALCULATE THE UNBALANCED LOAD ON THE CENTER UPRIGHT, YOU NEED TO DETERMINE HALF THE DEPTH OF THE SHELF PLUS 1.5 INCHES MULTIPLIED BY HALF THE LOAD ON THE SHELF.



	Island Gondola:			SECTION A		SECTION B	
	((Shelf depth / 2) + (1 1/2))x(Load / 2)			Shelf1 Inch-pounds	Shelf2 Inch-pounds		
SECTION A	11 + 1 1/2	x	200	=	2500		
	11 + 1 1/2	x	250	=	3125		
	12 + 1 1/2	x	150	=	2025		
	12 + 1 1/2	x	150	=	2025		
	11 + 1 1/2	x	200	=		2500	
	11 + 1 1/2	x	250	=		3125	
SECTION B	12 + 1 1/2	x	200	=		2700	
	12 + 1 1/2	x	250	=		3350	
	11 + 1 1/2	x	200	=		2500	
	11 + 1 1/2	x	250	=		3125	
TOTAL (Section A et B)					9675	23375	

ATTENTION : Subtract the smaller unbalanced load from the larger: 23375 - 9675 = 13700. This is the total unbalanced load acting on the central upright.

In the example above, 13700 inch-pounds does not exceed the limit of 15500 inch-pounds for the S Series. Should you reduce the load on side 1 to 0 and the total for sections A & B stay the same (23375 inch-lb), side 2 will exceed the limit of 15500 inch-pound creating a severe load unbalance. **As a precaution, always pay attention on how you load and unload one side of a gondola to ensure you do not create a severe unbalanced load situation. For S Series shelving, never exceed the limit of 15,500 inch-pound of unbalance.**





WWW.ETALEX.CA

CONTACT US

ANJOU PLANT

8501, Jarry Street East,
Montreal, QC H1J 1H7

T 514 351-2000

SF 1 800 351-3125

SAINT-BRUNO PLANT

1299, Marie-Victorin,
St-Bruno, QC J3V 6B7

T 514 351-2000

SF 1 800 351-3125

RAY-LAWSON PLANT

10251, Ray-Lawson,
Anjou, QC H1J 1L6

T 514 351-2000

SF 1 800 351-3125



FACEBOOK/ETALEX



LINKEDIN/ETALEX



YOUTUBE/ETALEX

FAIT AU CANADA 🇨🇦